

## RELEASE NOTES

# PrintManager

version 2.2.1

Erstellt von:           Andreas Hartmann  
Geändert von:          Andreas Hartmann  
Gespeichert am:        5. Juni 2007

Version:                5

Radebeul, den 2007-06-05



---

## Preamble

This is a legal agreement between you (either an individual person or a company) and Hartmann media solutions *hmedia*. You agree to be bound by this agreement by installing, copying or using the PrintManager software.

If you do not have a valid license for the PrintManager software, you are not authorized to install, copy or otherwise use the software.

Provided that you have a valid license and you agree with the terms of this agreement, Hartmann media solutions grants you the following rights:

1. You may install as many instances of the PrintManager software as you want, if this is in accordance with this agreement.
2. You may copy the PrintManager software or documents that accompany this software in accordance with this agreement.

The information contained in this document and any other document belonging to the PrintManager software is subject to change without notice and does not contain any liabilities to incur by Hartmann media solutions. Hartmann media solutions takes no charge for any errors that may appear in these documents. Errors and omissions are excepted. Any documentation that accompanies the PrintManager software is licensed for internal, non-commercial reference purposes only.

No part of the PrintManager software or any PrintManager software artefacts may be in any form given to third parties.

Hartmann media solutions reserves all rights not expressly granted in this license.

You may not reverse engineer, decompile or disassemble this software except that you have a written permission by Hartmann media solutions to do so.

This license applies to all updates and supplements that Hartmann media solutions will provide.

Hartmann media solutions may terminate your license if you fail to comply with the terms and conditions of this license. In this case you have to uninstall all your instances of the PrintManager software and you have to destroy all copies of the software and any of its artefacts.

THIS SOFTWARE IS PROVIDED „AS IS“ AND ANY EXPRESSED OR IMPLIED WARRANTIES, INCLUDING, BUT NOT LIMITED TO, THE IMPLIED WARRANTIES OF MERCHANTABILITY AND FITNESS FOR A PARTICULAR PURPOSE ARE DISCLAIMED. IN NO EVENT SHALL HARTMANN MEDIA SOLUTIONS OR ITS CONTRIBUTORS BE LIABLE FOR ANY DIRECT, INDIRECT, INCIDENTAL, SPECIAL, EXEMPLARY, OR CONSEQUENTIAL DAMAGES (INCLUDING, BUT NOT LIMITED TO, PROCUREMENT OF SUBSTITUTE GOODS OR SERVICES; LOSS OF USE, DATA, OR PROFITS; OR BUSINESS INTERRUPTION) HOWEVER CAUSED AND ON ANY THEORY OF LIABILITY, WHETHER IN CONTRACT, STRICT LIABILITY, OR TORT (INCLUDING NEGLIGENCE OR OTHERWISE) ARISING IN ANY WAY OUT OF THE USE OF THIS SOFTWARE, EVEN IF ADVISED OF THE POSSIBILITY OF SUCH DAMAGE.

This product includes software developed by The Apache Software Foundation (<http://www.apache.org/>).

© Copyright 2006



Andreas Hartmann media solutions  
Ludwig-Richter-Allee 6  
01445 Radebeul - Germany  
mail@hmedia.de

All rights reserved.  
Printed in Europe

All trademarks and registered trademarks used herein are the property of their respective owners.

## Processing Note

This document is written with OpenOffice.org 2.0. The original file is saved as Release Notes 2.2.1.odt

## Versions

<b>Date/Version</b>	<b>Editor</b>	<b>Changes</b>
2007-06-05	A. Hartmann	Initial version

---

## 1 Features

- iNEWS 2.6 supported
- Installation packages for Linux and Windows
- Runs as service under Windows and demon under Linux, respectively

## 2 Installation And Configuration

---

**IT IS STRICTLY SUGGESTED TO REMOVE THE PREVIOUS PRINTCLIENT / PRINTSERVER SOFTWARE COMPLETELY FROM YOUR SYSTEM.**

---

### PrintClient

1. Open the related directory on your installation medium and run the `setup.exe`.
2. Follow the instructions during the setup procedure.
3. After installation manage the registry entries to configure PrintClient. Refer to PrintManager 2.2 User Manual how to configure the PrintClient registry keys.

### PrintServer for Windows

1. Open the related directory on your installation medium and run the `setup.exe`.
2. Follow the instructions during the setup procedure.
3. At the end of this procedure you get displayed the necessary steps after installation. You can find this document also as `next-steps.rtf` in the `doc` directory in the PrintServer program directory.

Follow the steps in this document. Refer PrintManager 2.2 User Manual for more information.

## PrintServer for Linux

---

**OTHER THAN PRINTSERVER 2.2 FOR LINUX PRINTSERVER 2.2.1 STRICTLY ASSUMES TO FIND THE `java` COMMAND IN `/usr/bin`. SO ENSURE THERE IS A SYMBOLIC LINK TO THE JAVA RUNTIME ENVIRONMENT IN THIS DIRECTORY.**

---

1. In a terminal on your server as user root go to installation directory.
2. Install the rpm package with

```
# rpm -Uhv printserver-1.0-0.i586.rpm
```

3. At the end of the rpm installation you get displayed the license and the necessary steps after installation.

You can navigate with `Cursor up` and `Cursor down` through these docs. Quit the reading with `q`. You will find these files also in the `doc` directory inside the PrintServer program directory.

4. Follow the steps in the `readme.txt` document. Refer PrintManager 2.2 User Manual for more information.

---

*You don't need to change your `PATH` variable nor any other system or user file like `bashrc` or `bash_profile` to configure PrintServer 2.2.1.*

---

## PrintServer Configuration (both Linux and Windows)

Different to PrintServer 2.2 the PrintServer 2.2.1 `conf.xml` contains one additional parameter. In

```
<codepage>Windows-1252</codepage>
```

you can specify the character encoding in iNEWS. The iNEWS 2.6 database is usually encoded in UTF-8.

So you can specify a PrintServer to run with iNEWS 2.1 or earlier by using a dedicated ASCII codepage. Alternatively specify UTF-8 as codepage for a PrintServer running with iNEWS 2.6.

---

**IT IS NOT POSSIBLE TO RUN THE SAME PRINTSERVER FOR iNEWS 2.1 OR EARLIER AND iNEWS 2.6. IF YOU HAVE BOTH SYSTEMS YOU NEED SEPARATE PRINTSERVERS.**

---

## 3 Operations

### PrintClient

The PrintClient operations doesn't differ to previous versions. So refer to PrintManager 2.2 User Manual for more information.

### PrintServer for Windows

Under Windows the PrintServer runs as a system service. Thus you can use the MS Windows internal Service Control Manager to start and stop PrintServer. All messages are written in an EventLog viewable with MS Windows builtin Event Viewer. Figure 1 depicts the Hmedia Services EventLog on a PrintServer machine.

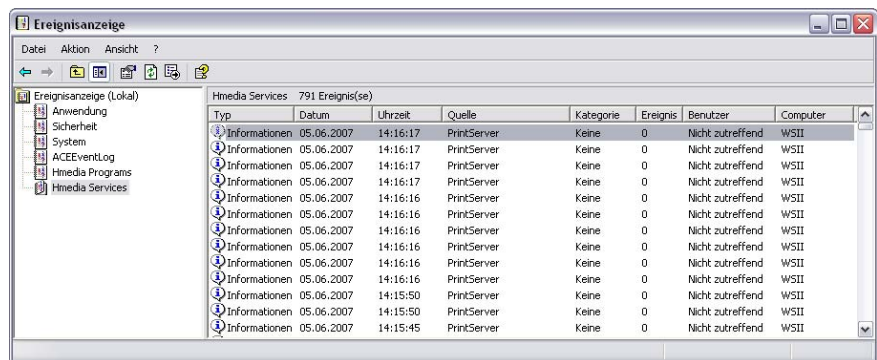


Figure 1: Event Viewer with Hmedia Services as active EventLog

Both programs ServiceControl Manager and Event Viewer can be found within MS Windows Control Panel in the Administrative Tools.

Additionally the PrintServer provides a PrintServer Control to handle the PrintServer service. During the installation procedure an icon is created on your Windows desktop as well as in your Startmenu. Figure 2 shows the PrintServer Control. The buttons on the left control the PrintServer. The message panel on the right displays PrintServer messages created after the start of this control. All previous messages can be read in the Event Viewer (see above).

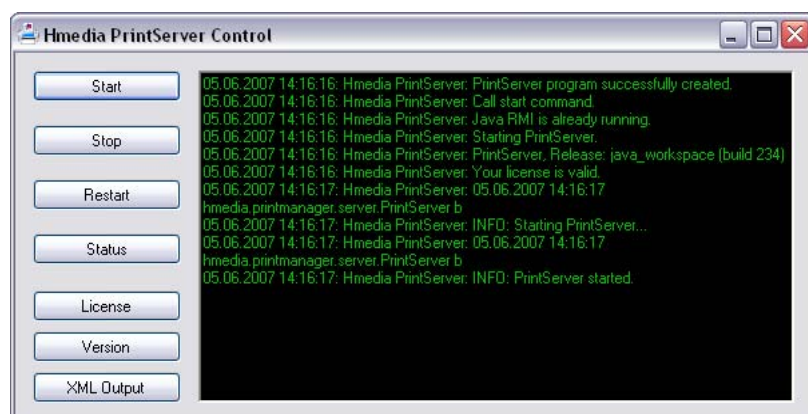


Figure 2: PrintServer Control

## PrintServer for Linux

Because most Linux server systems doesn't need a graphical user interface, the PrintServer under linux is a command line program only.

Nevertheless it works as a demon on RedHat/openSUSE based systems. On Linux systems based on other distributions handling of demons and runlevels may differ. Refer the documentation of yur Linux distro to get more information about runlevels and demon management.

PrintServer is managed by user root with the command `printserver <option>` wheras `<option>` is one of the following list:

- `start` – starts the PrintServer. This command is performed automatically in the init routine for runlevels 3, 4 and 5. To change this behavior use the `chkconfig` program. To get more information about `chkconfig` run `man chkconfig`.
- `stop` – stops the PrintServer.
- `restart` – performs a `stop` and in case of success thereafter a `start`.
- `status` – displays some information about PrintServers status and status of iNEWS connection.
- `license` – displays the remaining duration of your license.
- `version` – shows the PrintServer version.
- `xmloutput` – toggles the additional XML output. Refer to PrintManager 2.2 User Manual to get more information about this function.

The old `prt_...` scripts are obsolete and no longer in use.